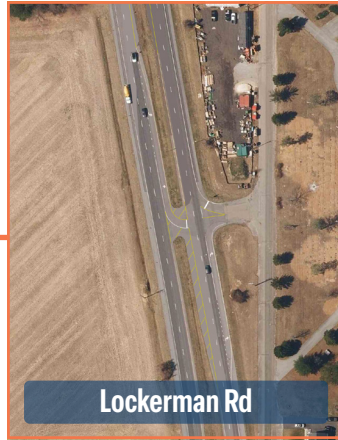
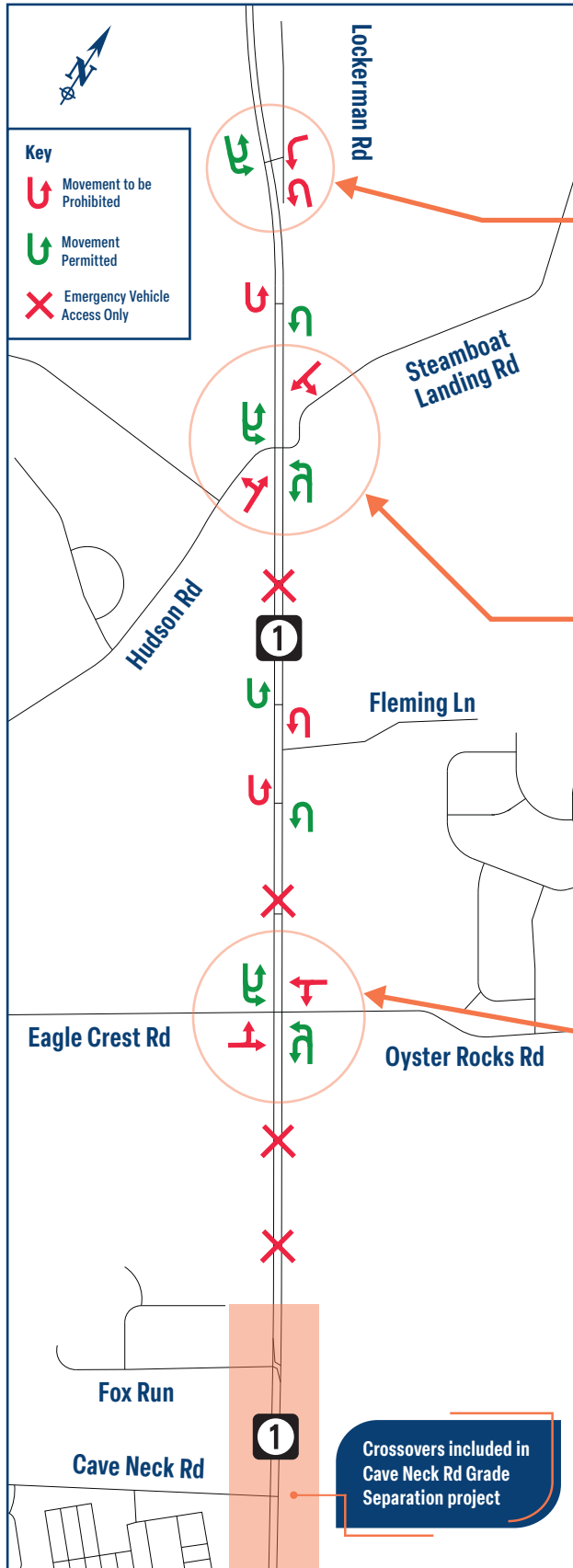




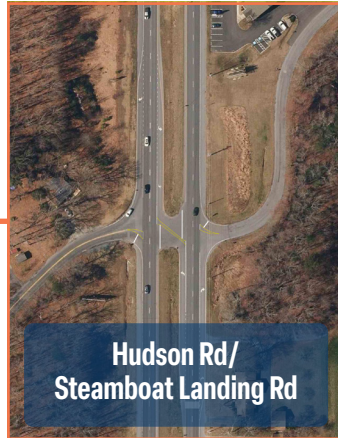
SR 1: Lockerman Road to Fox Run

Upcoming Crossover Closures and Restrictions

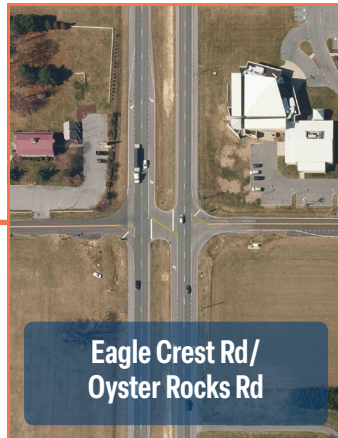
October 2025



Lockerman Rd



Hudson Rd/
Steamboat Landing Rd



Eagle Crest Rd/
Oyster Rocks Rd

PROJECT NEED

- 60 angle crashes since 2012 at Hudson Road/Steamboat Landing Road
- 15 angle crashes since 2012 at Eagle Crest Road/Oyster Rocks Road

PROJECT SUMMARY

- Reduces conflict points (crossing movements, crossover congestion)
- Short-term changes in line with long-term SR 1 planning
- Anticipated completion Fall 2025

IMPROVEMENTS

- All traffic required to turn right from Lockerman Road, Hudson Road, Steamboat Landing Road, Eagle Crest Road, and Oyster Rocks Road
- Left turns onto these roads from SR 1 still permitted
- 4 crossovers closed to typical traffic but remain available for use by emergency vehicles only
- 3 crossovers remain open to provide u-turn opportunities (one u-turn movement restricted to provide safe u-turn space for remaining traffic)

HOW TO NAVIGATE

- Use peripheral road network where possible
- Utilize grade separated interchanges for safest u-turn movement

SAFE SYSTEM APPROACH

- Safety improvements should be **proactive**
- Goal to reduce crash severity
- Roadway injuries and fatalities are unacceptable

